

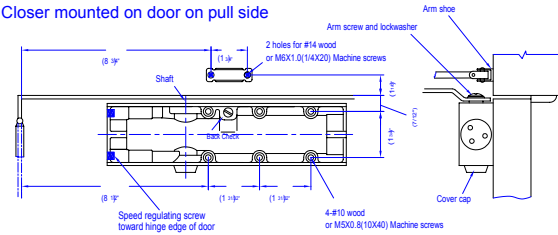


IRSS Briton DOOR CLOSER - BNT220 Series

ADJUSTABLE SIZE 2-4  
SURFACE MOUNTED CLOSER  
metric (inch) system

### STANDARD INSTALLATION

Closer mounted on door on pull side

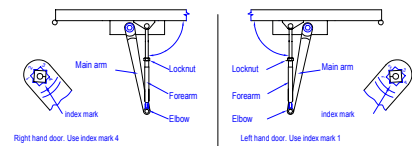


#### CLOSING POWER ADJUSTMENT



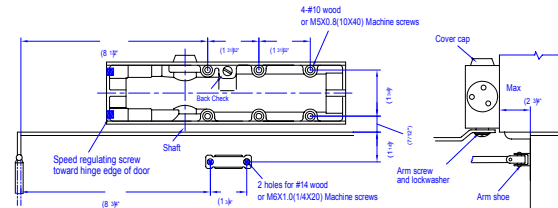
RIGHT HAND DOOR shown. Same dimensions apply for left hand door measured from hinge edge.

#### POSITION OF ARMS AND INDEX SETTINGS



### TOP JAMB INSTALLATION

Closer mounted on top jamb on push side of door.  
Reveals of 70(2 3/4") to 127(5") requires long top jamb forearms.

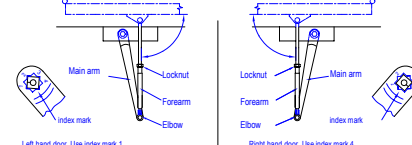


#### CLOSING POWER ADJUSTMENT



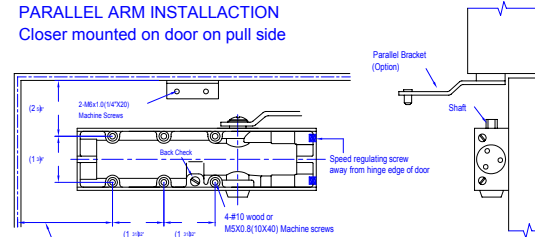
LEFT HAND DOOR shown. Same dimensions apply for right hand door measured from hinge edge.

#### POSITION OF ARMS AND INDEX SETTINGS

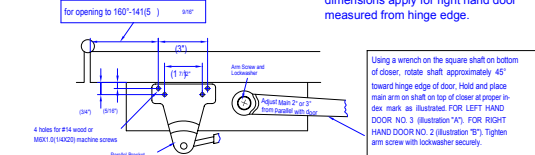


### PARALLEL ARM INSTALLATION

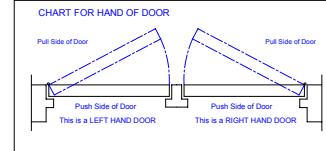
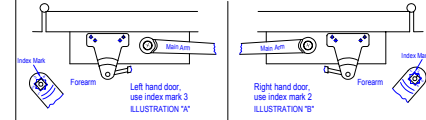
Closer mounted on door on pull side



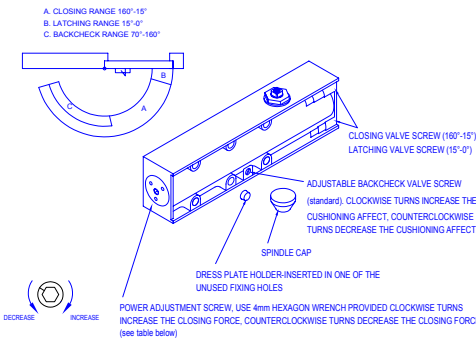
LEFT HAND DOOR shown. Same dimensions apply for right hand door measured from hinge edge.



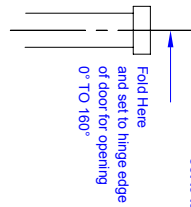
#### POSITION OF ARMS AND INDEX SETTINGS



### SPRING POWER & VALVE ADJUSTMENT



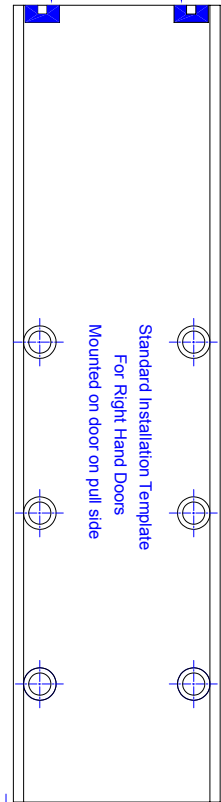
SIZE	NO. OF TURNS	DIRECTION
2	6	COUNTERCLOCKWISE
3	0	FACTORY PRESET
4	5	CLOCKWISE



Top jamb of frame

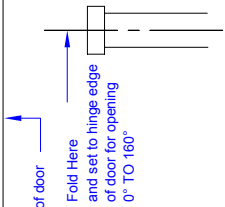
CUT OFF HERE FOR TEMPLATE

1# Closing speed regulating valve screw  
2# Latching speed regulating screw



Top jamb of frame

CUT OFF HERE FOR TEMPLATE



1# Closing speed regulating valve screw  
2# Latching speed regulating screw

